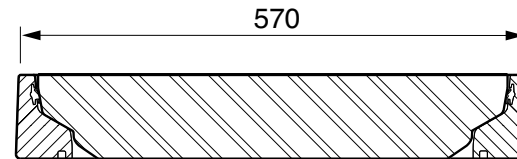
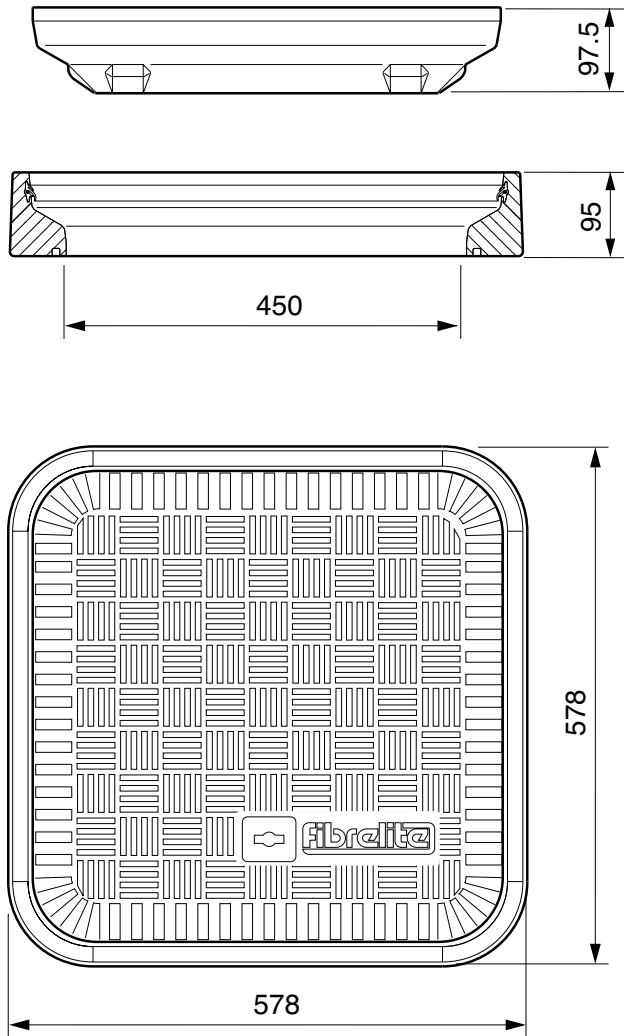




457mm square flat sealed composite cover and aluminium frame.

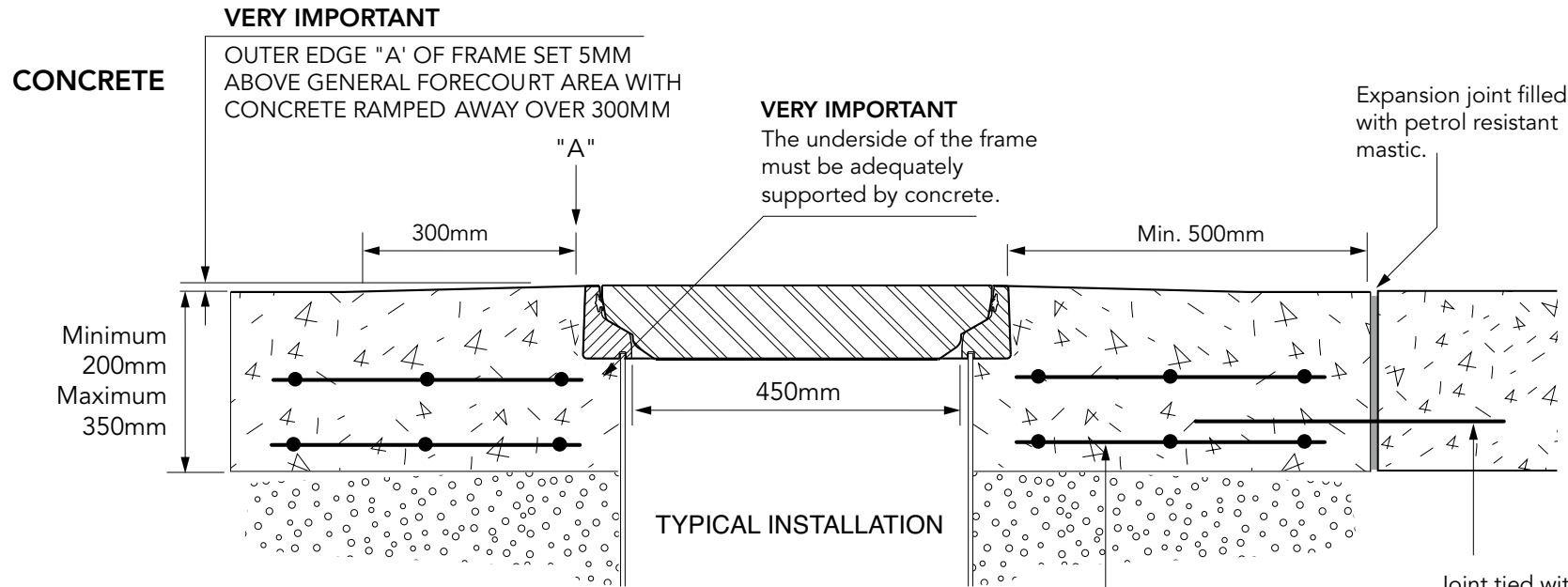
For reference purposes only. This drawing is not a specification. Order against product code only. To enable continuous improvement of our products, the designs and specifications are subject to change without notice.



Load Rating	Cover Weight	Frame Weight
B125	8.5 kg	8.5 kg
C250	14 kg	8.5 kg
D400	16 kg	8.5 kg

457mm square flat sealed composite cover and aluminium frame.

For reference purposes only. This drawing is not a specification. Order against product code only. To enable continuous improvement of our products, the designs and specifications are subject to change without notice.

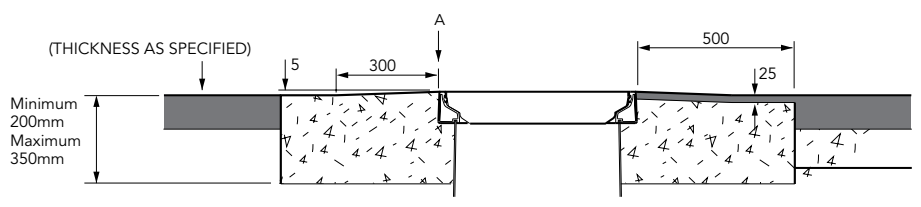


Concrete reinforced with 2 layers of reinforcement mesh.

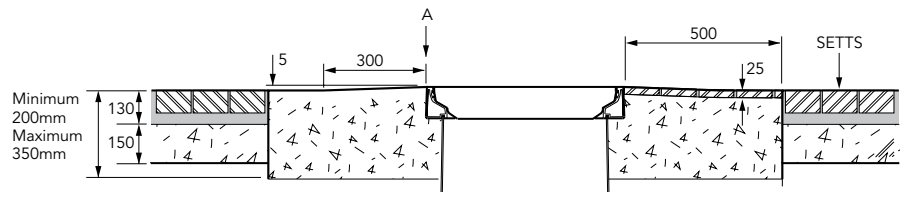
Joint tied with 600mm long x 12mm dowel at 600mm c/c. Half bonded



TARMACADAM



SETTS



457mm square flat sealed composite cover and aluminium frame.

For reference purposes only. This drawing is not a specification. Order against product code only. To enable continuous improvement of our products, the designs and specifications are subject to change without notice.

