

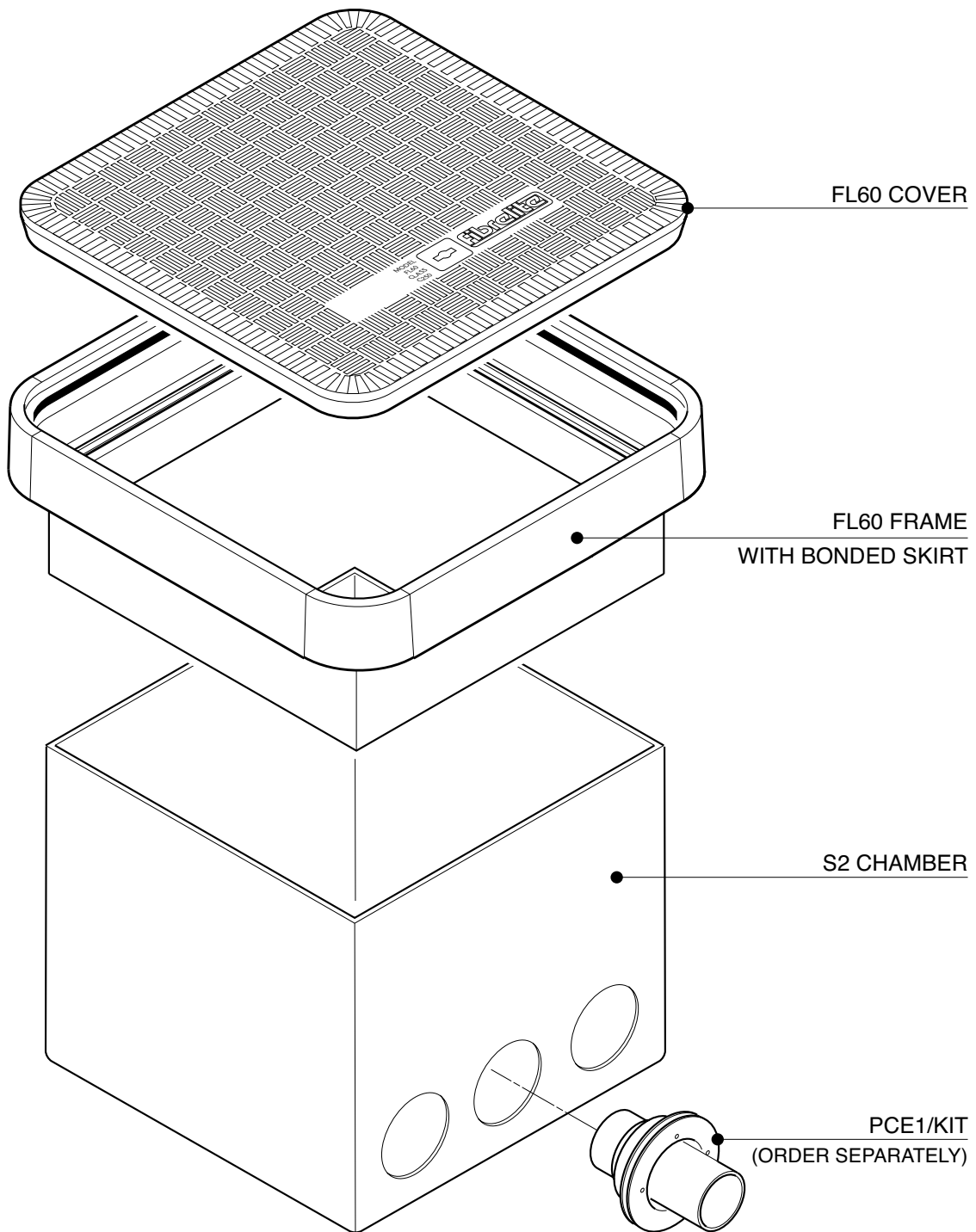
Category: **BELOW GROUND REMOTE FILL CHAMBER SYSTEMS**

Product Description: Electrical Drawpit - 600mm cubed GRP chamber with a 110mm deep GRP skirt and 600mm square flat sealed cover.

Page No: **1**

Product Code: **S2-360/SKIRT**

Date: **November 2011**



Category: **BELOW GROUND REMOTE FILL CHAMBER SYSTEMS**

Product Description: **Electrical Drawpit - 600mm cubed GRP chamber with a 110mm deep GRP skirt and 600mm square flat sealed cover.**

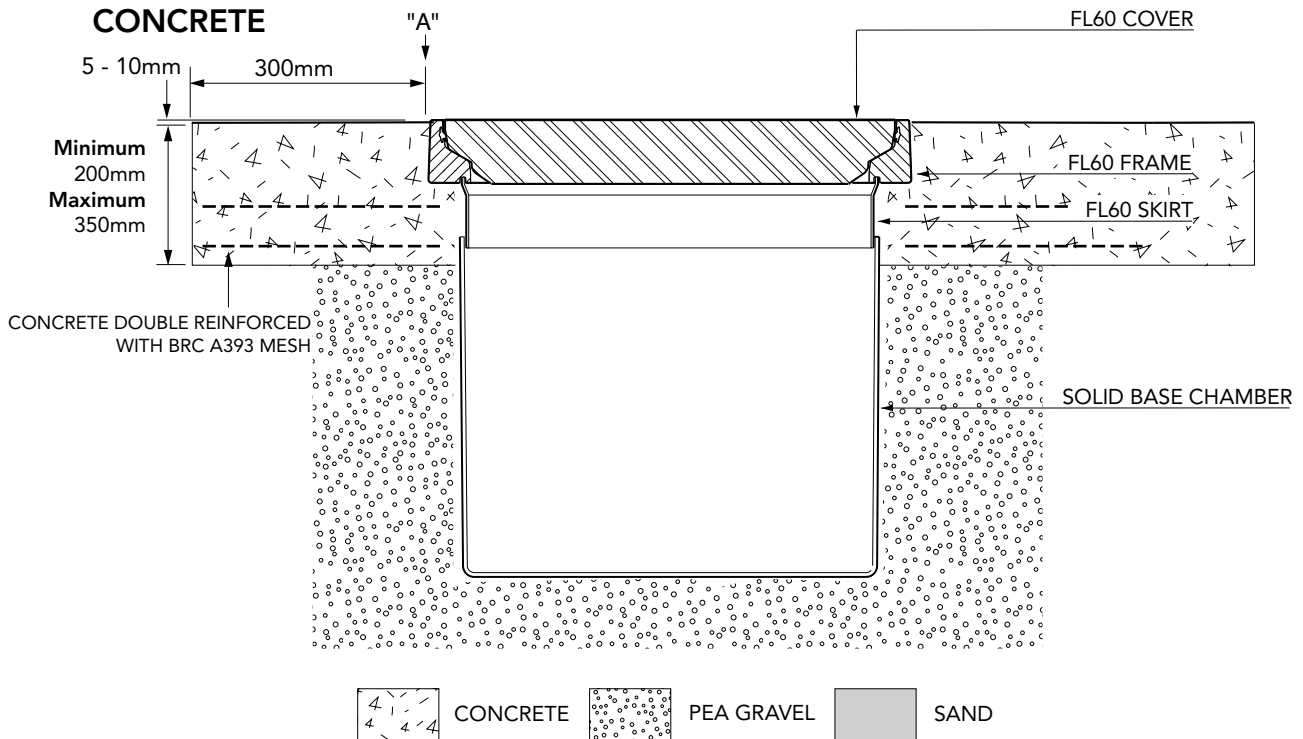
Page No: **2**

Product Code: **S2-360/SKIRT**

Date: **November 2011**

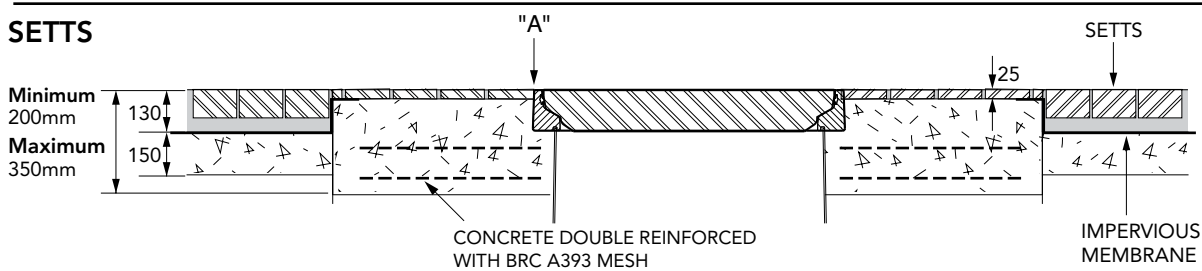
VERY IMPORTANT
 OUTER EDGE "A" OF FRAME
 SET 5 - 10MM ABOVE GENERAL
 FORECOURT AREA WITH
 CONCRETE RAMPED AWAY
 OVER 300MM

TYPICAL INSTALLATION

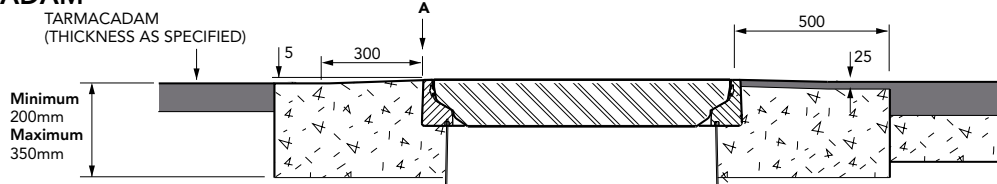


ALTERNATIVE INSTALLATION ADVICE

SETTS



TARMACADAM



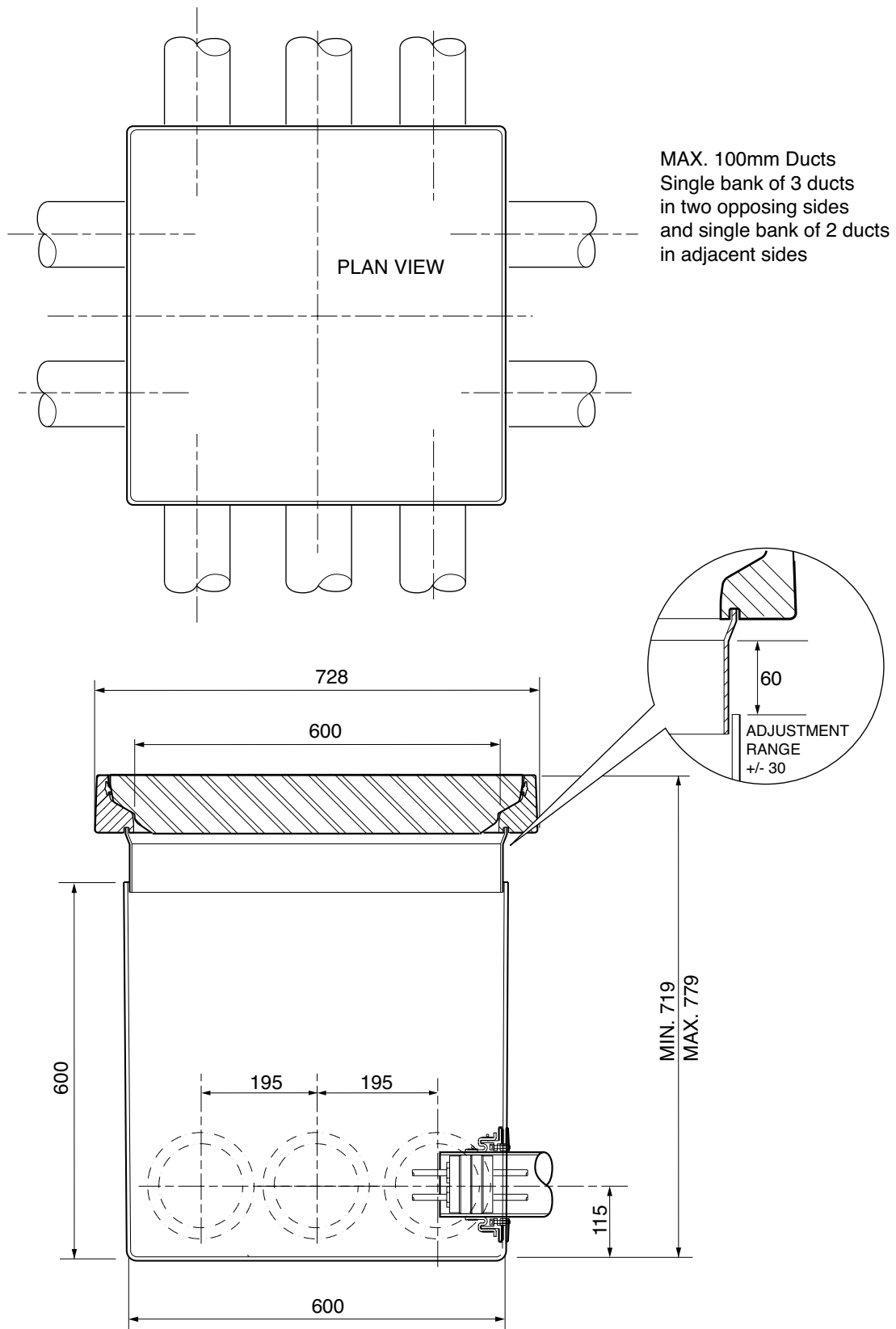
Category: **BELOW GROUND REMOTE FILL CHAMBER SYSTEMS**

Product Description: Electrical Drawpit - 600mm cubed GRP chamber with a 110mm deep GRP skirt and 600mm square flat sealed cover.

Page No: **3**

Product Code: **S2-360/SKIRT**

Date: **November 2011**



Category: **BELOW GROUND REMOTE FILL CHAMBER SYSTEMS**

Product Description: Electrical Drawpit - 600mm cubed GRP chamber with a 110mm deep GRP skirt and 600mm square flat sealed cover.

Page No: **4**

Product Code: **S2-360/SKIRT**

Date: **November 2011**